

Copper Jug Replica Turning Process

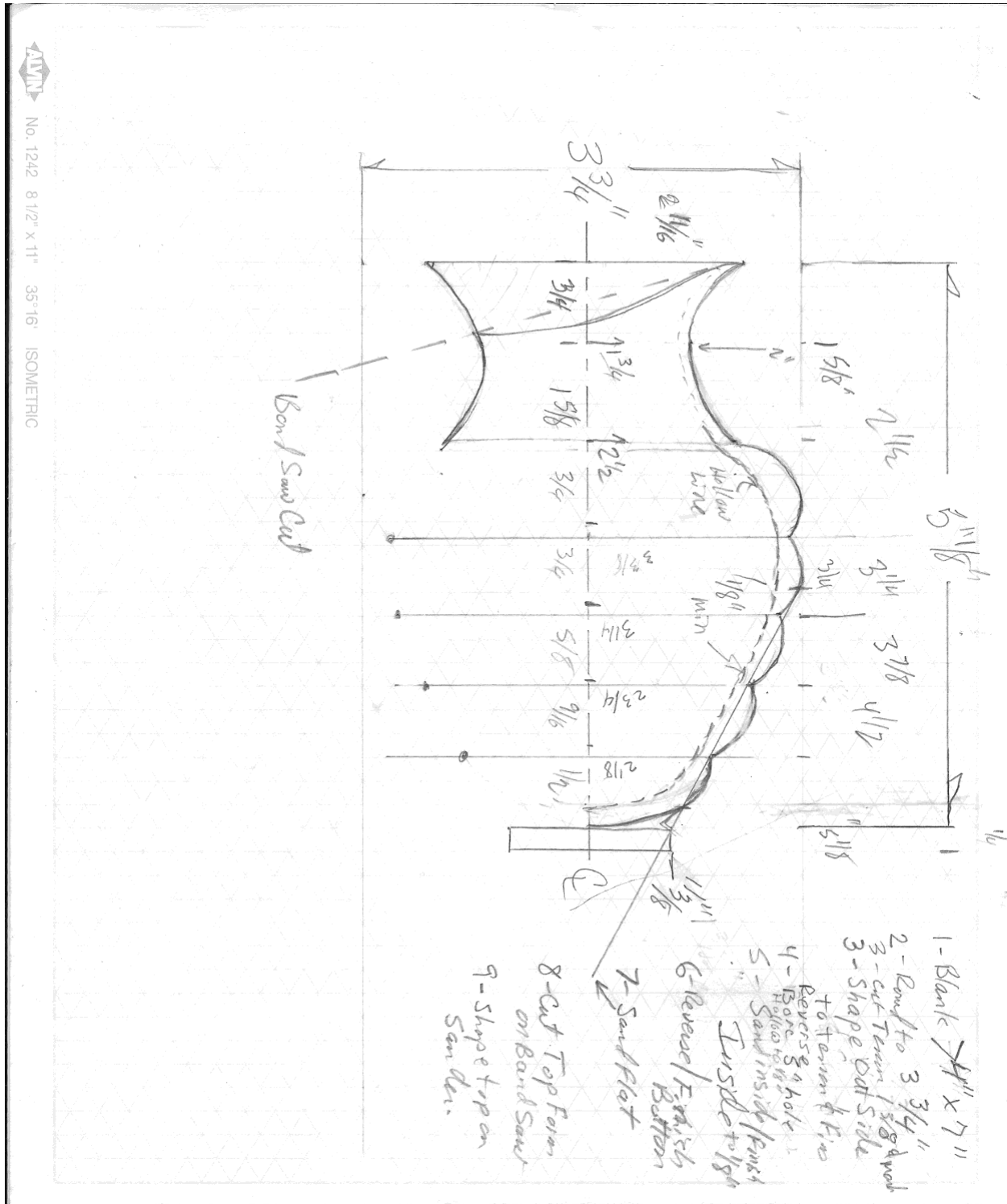


Figure 3. My initial measurements, notes and template sketch. (Note that this copy is not to scale).

Usually I round between centers and then measure and cut my tenons.

Copper Jug Replica Turning Process



Figure 4. Start with a blank larger than the template and so on. Marking appears and centered on the lathe. Allow for tenon length.



Figure 5. Round the blank to 3-3/4" and mark off the tenons leaving 5-1/8" for the final piece.



Figure 6 After turning both tenons mount the blank in a chuck and turn the top of the vase (2-3/4" in my case).



Figure 9: Decorate and finish the outside of the vase. Also, establish best tenon for your set of 7. Establish the top of the top cover by parting the cove center to a diameter of 2". Also round over the top of the first bead.

Copper Jug Replica Turning Process



Figure 10. Reverse chuck the blank using the tail stock to seat the blank prior to tightening the chuck.



Figure 11. Part off the top Tenon and establish the depth of the vase. Then drill to the desired inside depth. If you use a forstner bit, be sure to drill at slow speed clearing the chips often so that the bit does not become trapped.



Figure 12. Turn vase lip and establish the wall thickness. Continue hollowing from top to bottom stopping often to measure wall thickness.

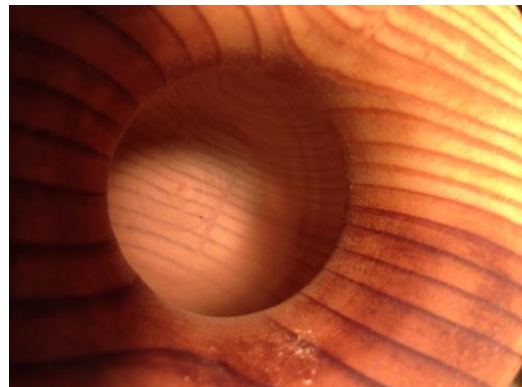


Figure 13. Sand and finish the inside of the vase.

Copper Jug Replica Turning Process



Figure 14. Vase ready to part off after all finishing is completed.



Figure 15 Vase parted off lathe with bottom sanded and finished.

The following figures outline how the project was finished off of the lathe. This is just shaping with the sanding equipment I have in my shop. The finishing process was the same as I used when turning the vase. After the piece is fully dried I finish the project with rouge, triple E and carnauba wax (Beal System).

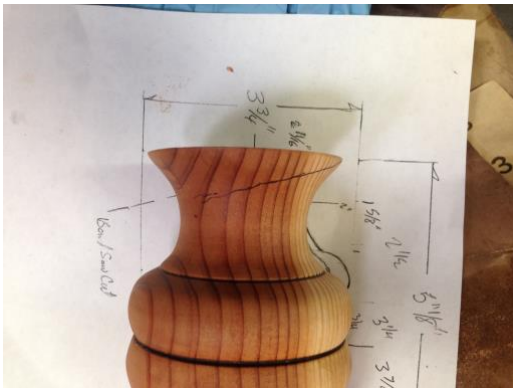


Figure 16. Estimating lip cut line.



Figure 17. Start shaping top on a flat sander.

Copper Jug Replica Turning Process



Figure 18. Move to oscillating sander after initial shape is formed.



Figure 19. Shaping the final top curves.

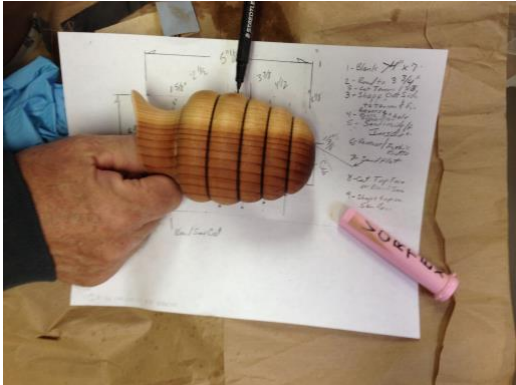


Figure 20. Estimate location for the flat side on second to 4th bead.

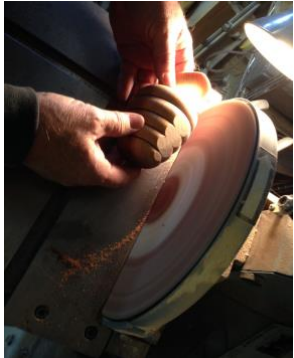


Figure 22. Flat side ground on disk sander.



Figure 21. Marking the flat side location.

Copper Jug Replica Turning Process



Figure 23. After sanding and adding finish piece is compared to the original.

Hopefully there is enough information in these figures to help you create your own replica. If you need any further information feel free to call me.

Happy Turning,

Terry Glover
(520) 290-8503